

Printing photos from Adobe Photoshop (OS Windows)

Output ICC profile application for:

- inkjet photo paper **FOMEI Collection Baryta SILK 310**
- photo printer **Canon iPF PRO-1000**
- OS Windows and sw Adobe Photoshop

This document helps you to produce photos with a predictable and repeatable result. The goal is to print the faithful color and truly black&white photos. The tutorial will guide you through Adobe Photoshop color management and printer driver settings. The output ICC profile will be applied in the Adobe Photoshop, so color management in the printer driver will be disabled (turned off).

Recommendations

- have professionally calibrated and profiled display
- keep your printer in perfect condition, verify the nozzle functionality (nozzle check)
- view the photos in daylight or under standardized light source (CRI ≥ 97)

Working with ICC profile – Quick guide for professionals

Save the downloaded output ICC profile into the folder **C:/Windows/system32/spool/drivers/color**.

In the Adobe Photoshop print dialog box select Color Handling: Photoshop Manages Colors, set the downloaded ICC profile and for Rendering Intent select Relative Colorimetric with Black Point Compensation turned on, see Table 1 and Figure 2.

In the **Canon iPF PRO-1000** printer driver (click the Print Settings in Adobe Photoshop print dialog box) select **Photo Paper Pro Platinum**, the highest available Print Quality and turn on Color/Intensity Manual Adjustment. In the Manual Color Adjustment dialog box, on the Color Adjustment tab select Defaults (all values to 0) and on the Matching tab select None (see table 2 and Figures 3, 4 and 5).

Adobe Photoshop (Figure 2)
Color Handling: Photoshop Manages Colors
Printer Profile: FOMEI_Collection_Baryta_SILK_310_iPF_PRO-1000_PPPP_HQ
Normal Printing
Rendering Intent: Relative Colorimetric
turn on Black Point Compensation

Table 1: Adobe Photoshop print dialog box settings

Canon iPF PRO-1000 printer driver (Figures 3, 4 a 5)
Quick Setup tab - Media Type: Photo Paper Pro Platinum
Print Quality: Highest
turn on Color/Intensity Manual Adjustment
Manual Color Adjustment dialog box - Color Adjustment tab - Defaults (all values to 0)
Matching tab - None

Table 2: Printer driver settings

If this quick guide does not suit you, continue reading the step-by-step instructions.

Detailed instructions for working with output ICC profile

ICC profile location

Save the downloaded output ICC profile [FOMEI_Collection_Baryta_SILK_310_iPF_PRO-1000_PPPP_HQ](#) into the system folder:

[C:/Windows/system32/spool/drivers/color.](#)

This will make the ICC profile available for Adobe Photoshop color management.

Adobe Photoshop color management settings

Open Adobe Photoshop and check the basic color management settings in Edit – Color Settings menu, see Figure 1.

This setting ensures correct operation of the Adobe Photoshop color management system. The image color information will be preserved.

Note: Owners of wide-gamut displays can set Adobe RGB (1998) as RGB working space.

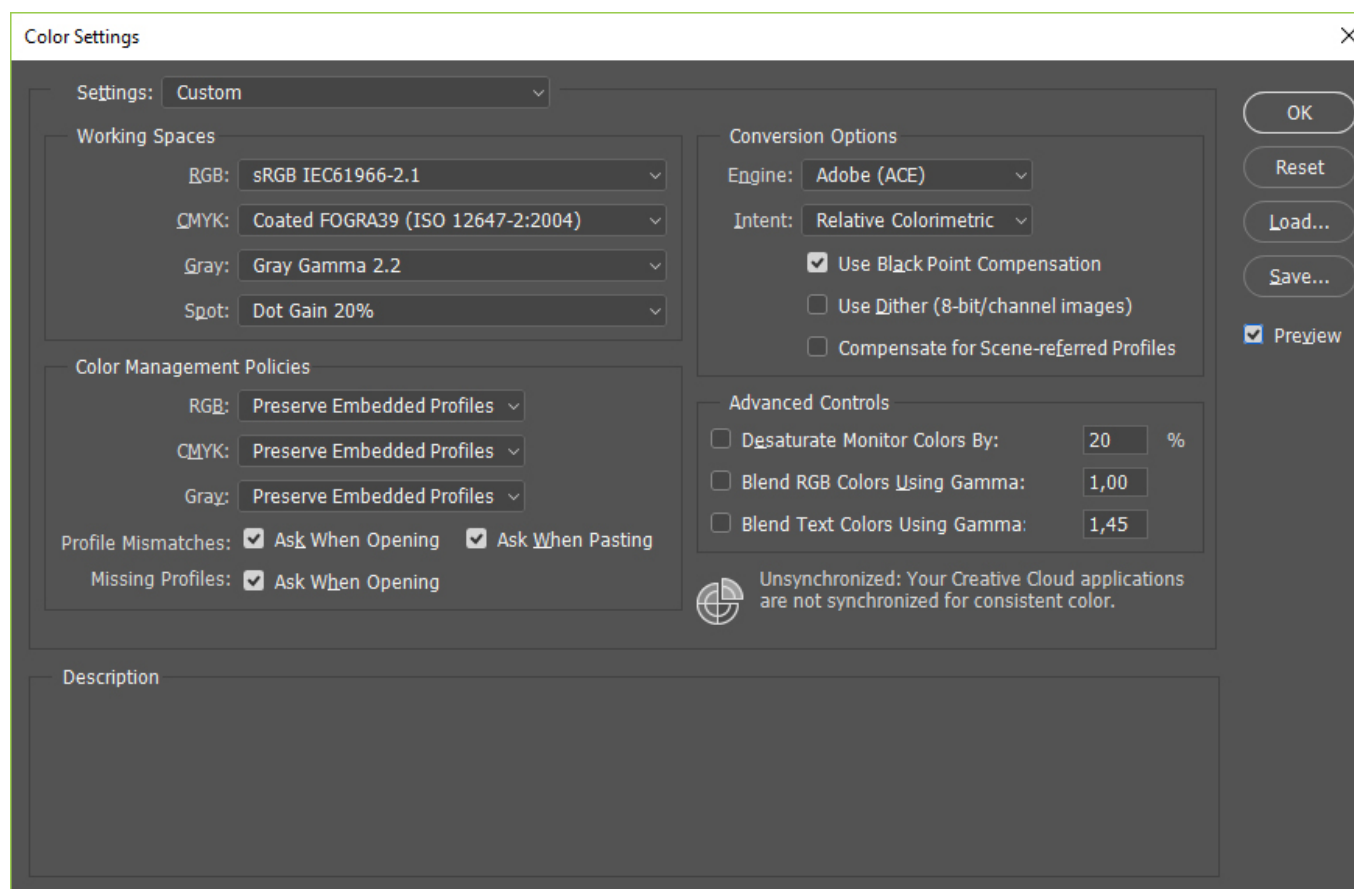


Figure 1: Recommended color management settings in Adobe Photoshop CC (Edit – Color Settings menu)

Printing from Adobe Photoshop

Open the image you want to print in Adobe Photoshop. Go to the Photoshop print dialog box by selecting Print in the File menu, see Figure 2.

Click the Print Settings button and check the settings in the printer driver according to Figures 3, 4 and 5.

In the Printer Setup area select the printer **Canon iPF PRO-1000**.

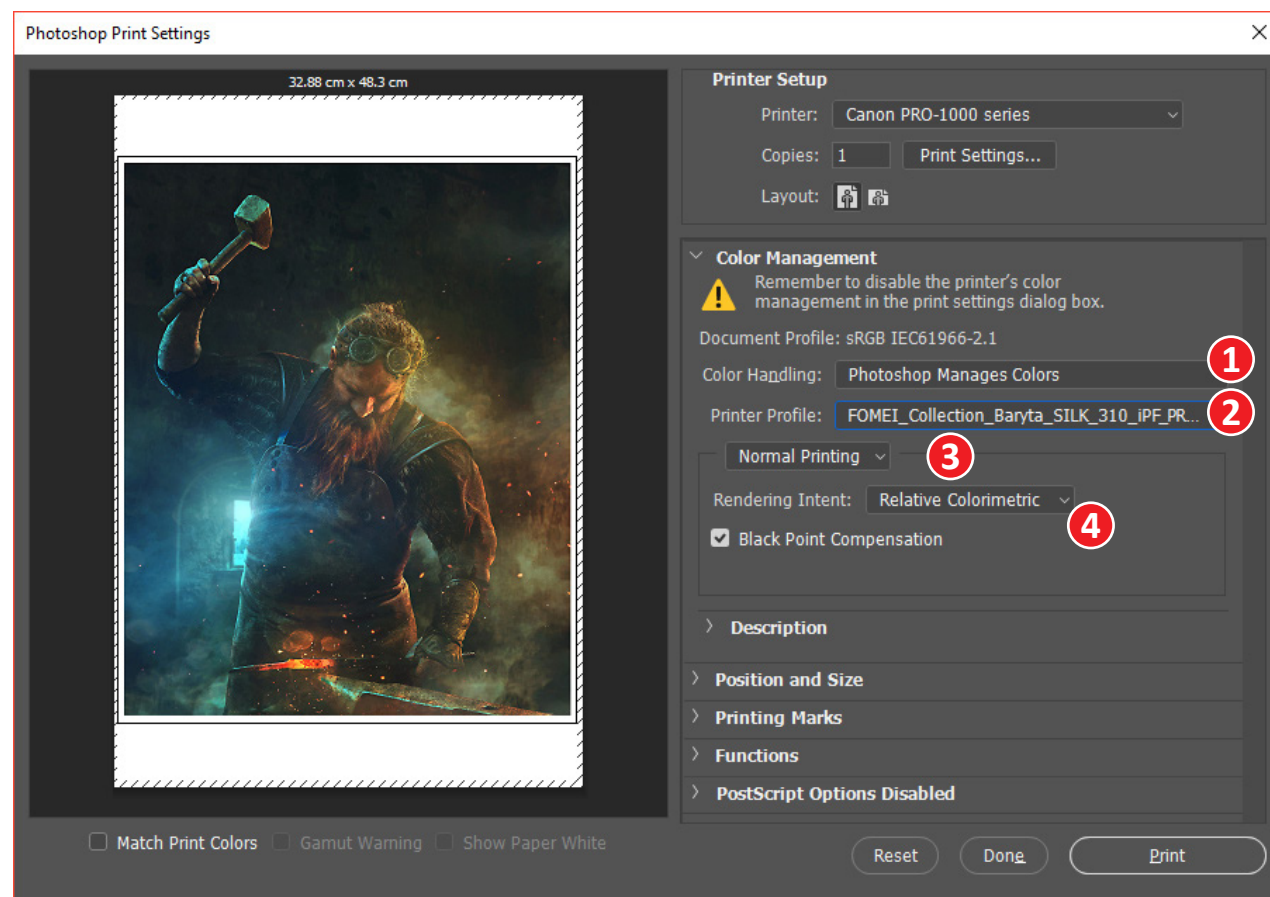


Figure 2: Print Color Management settings (File - Print menu) in Adobe Photoshop CC

- 1 - Color Handling: Photoshop Manages Colors
- 2 - Printer Profile: FOMEI_Collection_Baryta_SILK_310_iPF_PRO-1000_PPPP_HQ
- 3 - Normal Printing
- 4 - Rendering Intent: Relative Colorimetric with Black Point Compensation

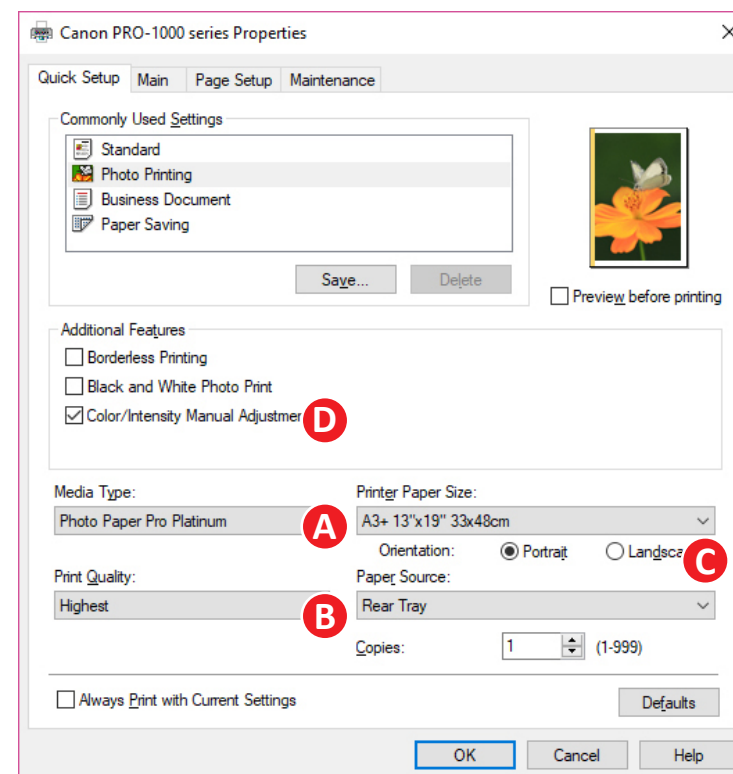


Figure 3: Printer driver settings - Properties - Canon iPF PRO-1000

- A - Media Type: Photo Paper Pro Platinum
- B - Print Quality: Highest
- C - select the required paper size and source
- D - turn on Color/Intensity Manual Adjustment and check the settings according to Figures 4 a 5

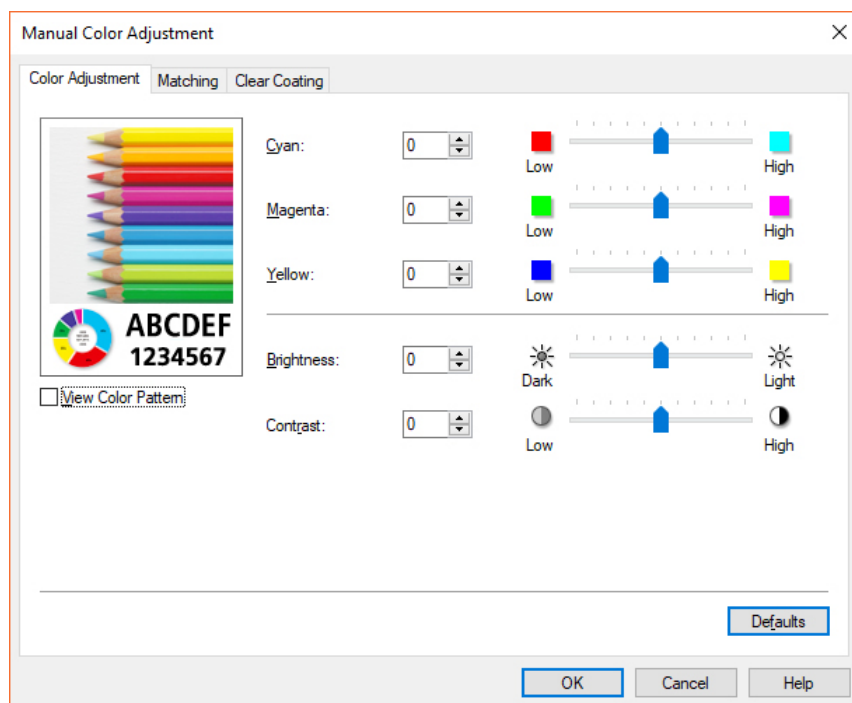


Figure 4: Printer driver - Manual Color Adjustment - Color Adjustment tab

On the Color Adjustment tab select Defaults (all values to 0), on the Matching tab select None (see Figures 4 a 5) and confirm with OK.

In Adobe Photoshop print dialog box open the Color Management and check the settings (see Figure 2, items 1-4).

And now you can print!

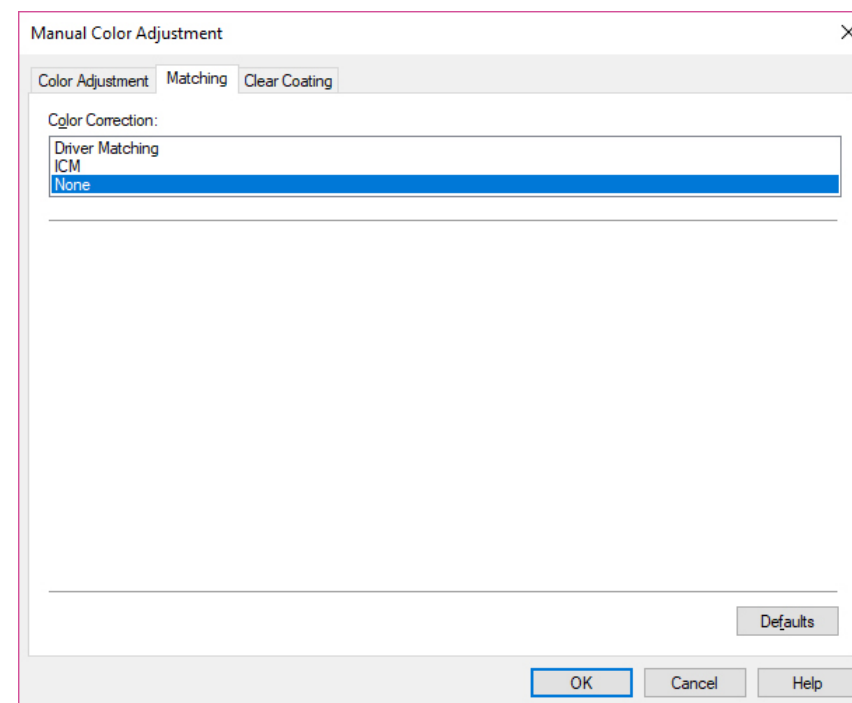


Figure 5: Printer driver - Manual Color Adjustment - Matching tab

Note: You have downloaded generic output ICC profile for FOMEI Collection Baryta SILK 310 paper. It was created with all the care on the Canon iPF PRO-1000 photo printer, using a professional measuring equipment and profiling software, under recommended conditions (temperature 18-25 °C, humidity 40-60 %). FOMEI is not responsible for the inaccurate results of the ICC profile deployment in your workplace. To get a custom ICC profile based on your particular printer, contact us at fototisk@fomei.com.



INKJET PHOTO MEDIA BY FOMEI

[FOMEI Collection Inkjet media overview](#)

Convert image data to photography, print your snaps. Beyond your own joy from the fact „I can complete the photo process“, you will find that on the paper photos you can discover the context and mistakes that the display has concealed. By printing and evaluating your photos, you will become a better photographer. Good light!

